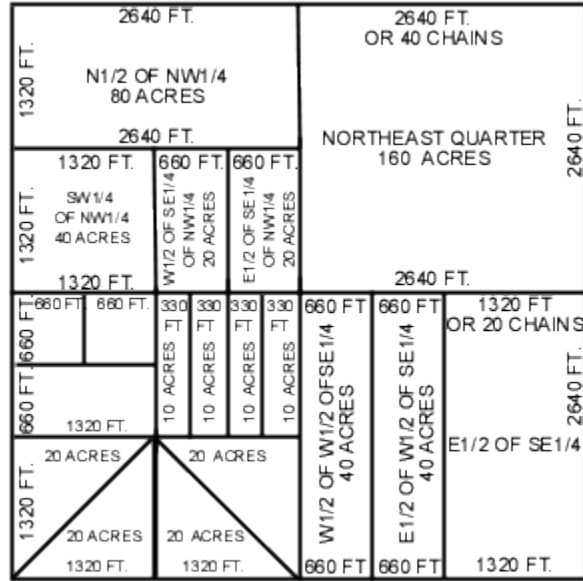


# A Section of Land, 640 Acres



## Long Measure

1 Mile	80 chains 320 rods 5280 feet
1 Chain	4 rods 66 feet 100 links
1 Rod	5-1/2 yards 16-1/2 feet 25 links
1 Link	0.66 feet 7-7/8 inches

## Square Measure

1 Sq. Mile	Regular section 640 acres
1 Acre	10 sq. chains 160 sq. rods 43, 560 sq. ft.
	An Acre is about 208 3/4 feet Sq. An Acre is 8 rods wide by 20 rods long, or any area the product of whose length by its width (in rods) is 160 or in chains is 10.
1 Sq. Rd.	30-1/4 sq. yds. 272-1/4 sq. ft.
1 Sq. Ft.	144 sq. ins

*Note: Acreage of farm property usually figured to center of road.*